



KIUC Wildfire Mitigation Plan (WMP)

Public Hearing Informational Meeting

Tuesday, September 23, 2025

Agenda

- Introductions
- KIUC WMP Presentation
- Comments

KIUC WMP

www.kiuc.coop/wildfire



2025 WILDFIRE MITIGATION PLAN

JANUARY 2025



1. Purpose & Objectives

- Reduce risk for KIUC members/customers
- Create increased reliability and safety
- Prevent, mitigate, respond/assist, and recover from wildfires
- Comply with current law and government regulations and guidelines
- Reduce liability

2. Risk Analysis & Drivers

- Climate Change
- Fire Weather
- Drought
- Vegetation Encroachment/Non-Native Vegetation
- Tree Failure/Tree Mortality
- Wind Loading
- Corrosive Environment
- Aging Equipment
- Pole Degradation
- Joint Use/Pole Loading

Fire Weather

- ▶ National Weather Service (NWS) Red Flag Warnings (RFW):
 - ▶ Winds greater than 20 mph
 - ▶ Relative humidity below 45%
 - ▶ Keetch-Byram Drought Index (KBDI) of 600 or more
- ▶ Issued State-wide, based on conditions at Honolulu Airport

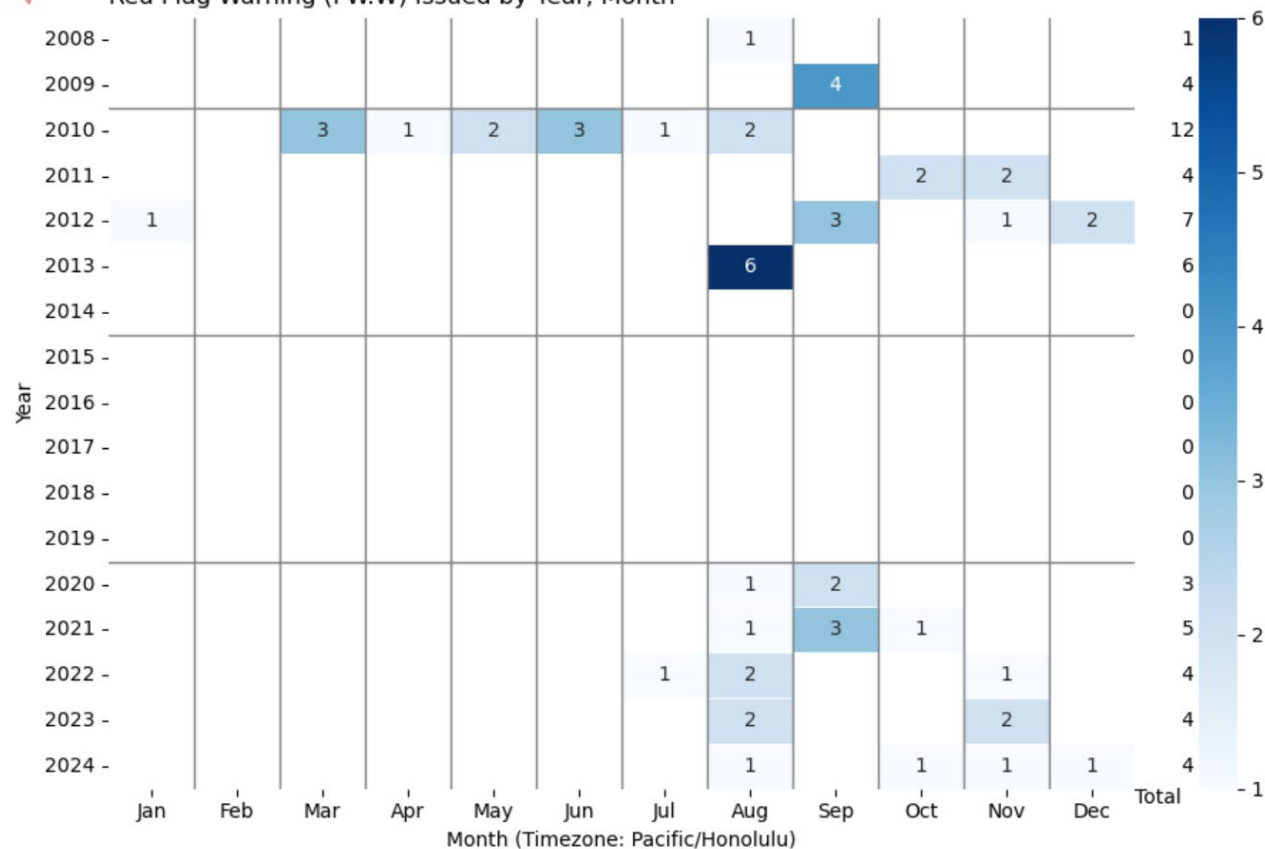
Hawaii RFW By Year & Month

➤ Most RFW Aug-Sep



NWS Issued for Counties/Zones for State of Hawaii

Red Flag Warning (FW.W) Issued by Year, Month

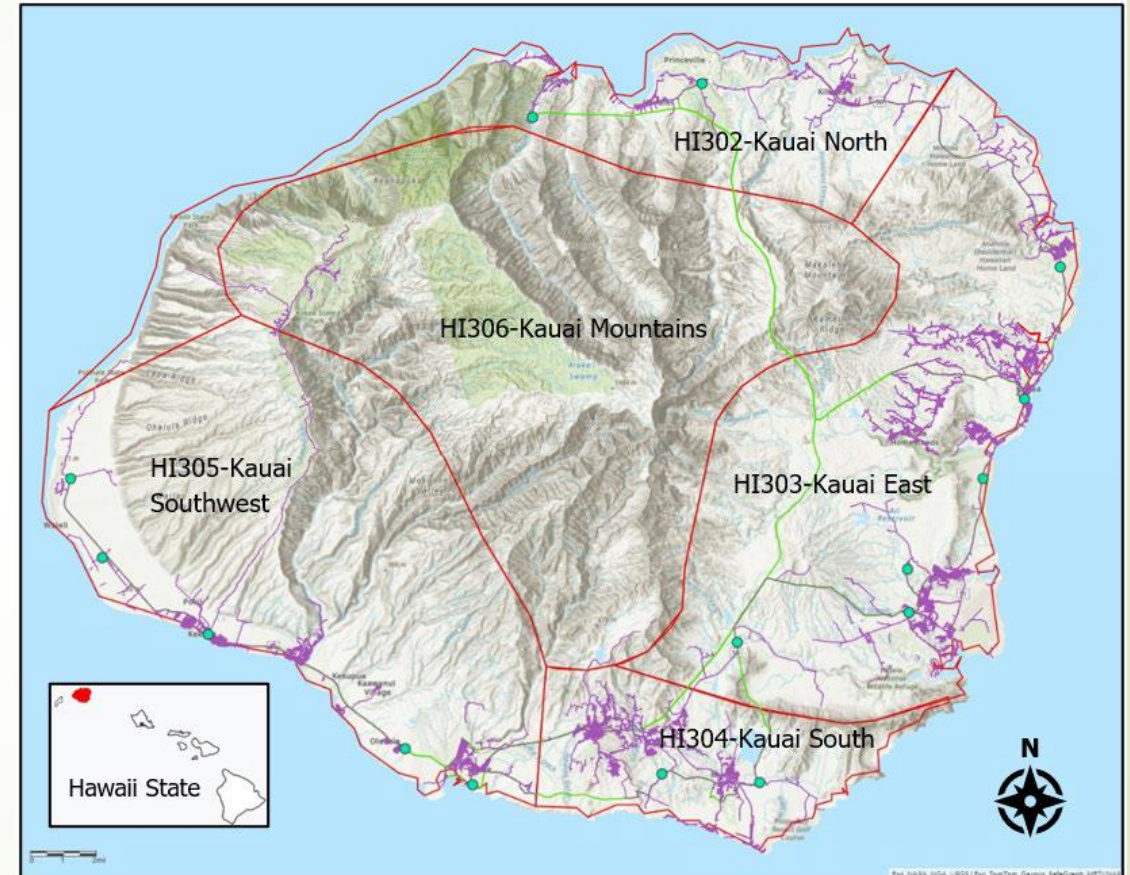


Risk Consequences

- Personal injuries or fatalities to the public, employees, and contractors
- Impact to native flora & fauna
- Damage to public and/or private property
- Damage and loss of KIUC-owned infrastructure and assets
- Impacts to service reliability and operations
- Damage claims and litigation costs, as well as fines
- Damage to KIUC's reputation and loss of public confidence
- Negative public opinion of the power industry in general

KIUC Service Area and Fire Weather Zones

- Almost all RFW are for South and Southwest zones only
- Think "Tree Tunnel to Kōke'e"



Kauai Island Utility Cooperative-Electric Service Area

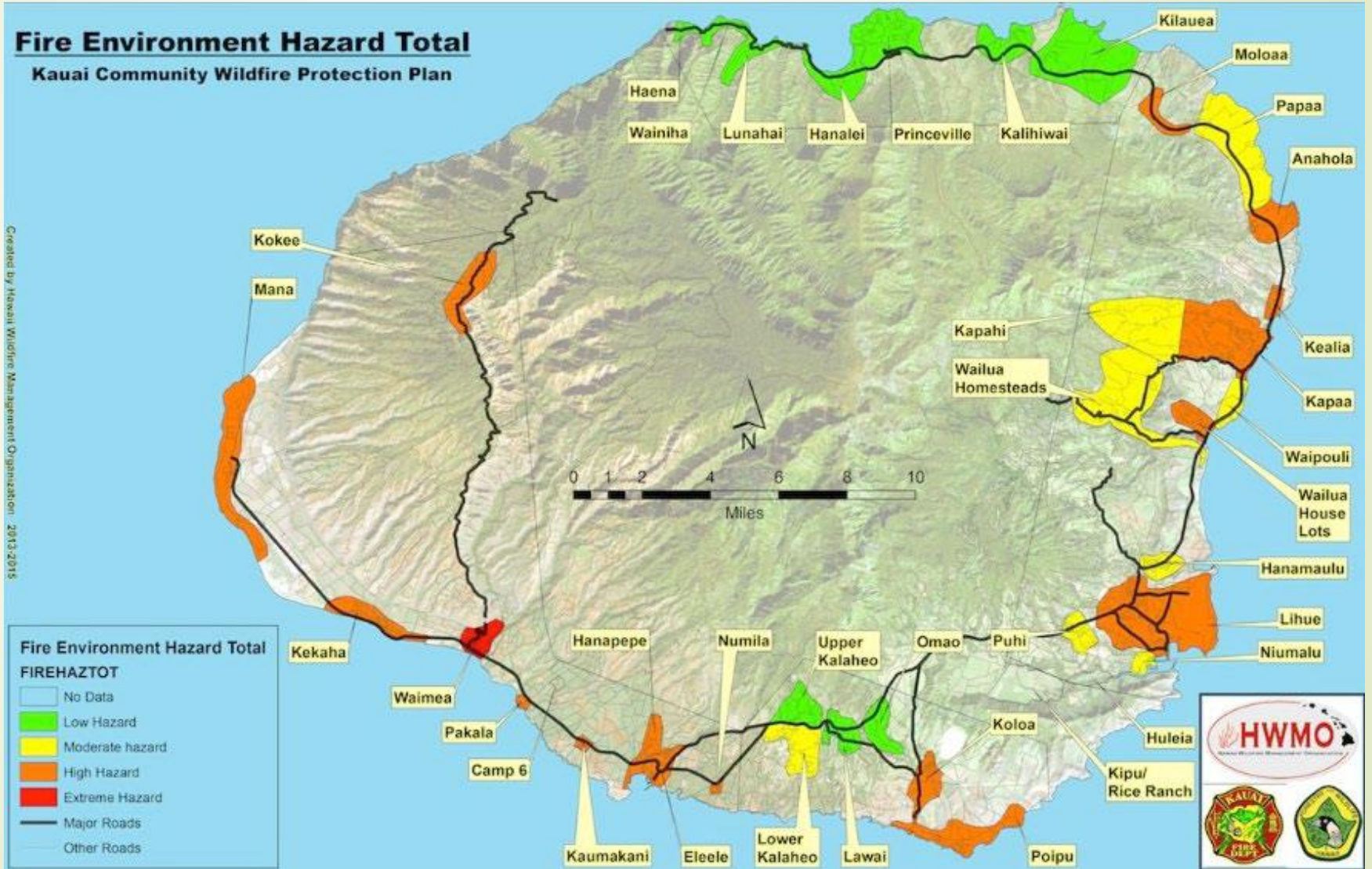
— OH Transmission Line

● Substation

— OH Distribution Line

□ Fire weather Zone

Wildfire Hazard Assessment Map



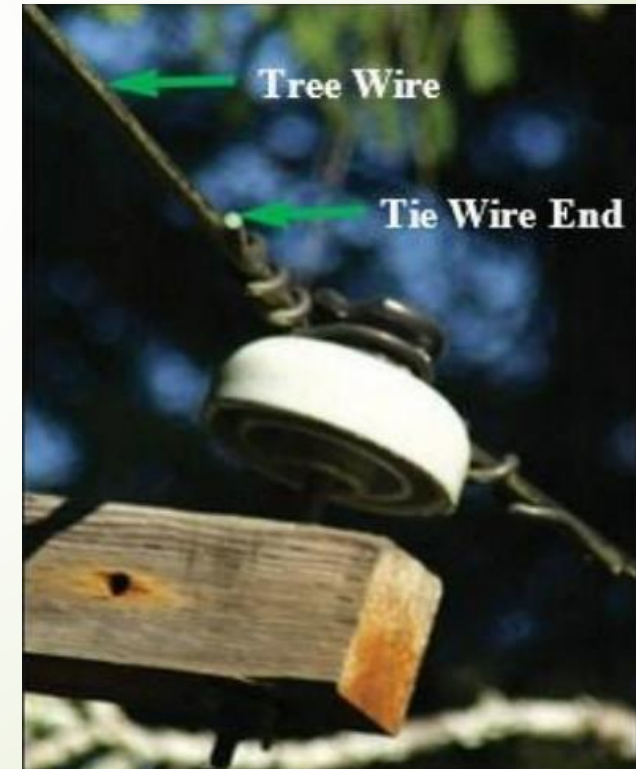
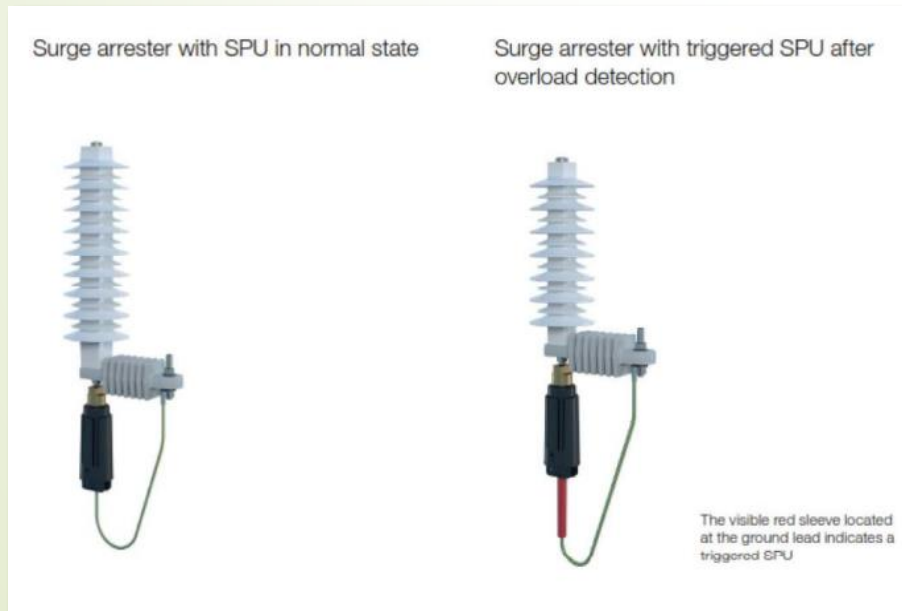
3. Fire Prevention Strategies

- Design & Construction
- Inspections & Maintenance
- Vegetation Management
- Operational Practices
- Situational & Conditional Awareness
- Response & Recovery



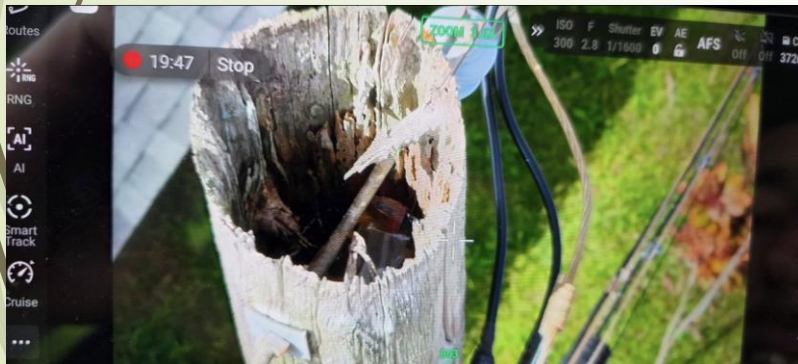
4. Design & Construction

- Overhead vs Underground conductor
- Bare-wire secondary replacement
- Install reclosers
- SCADA Monitoring
- Tree wire
- Fire-safe fuses and arresters

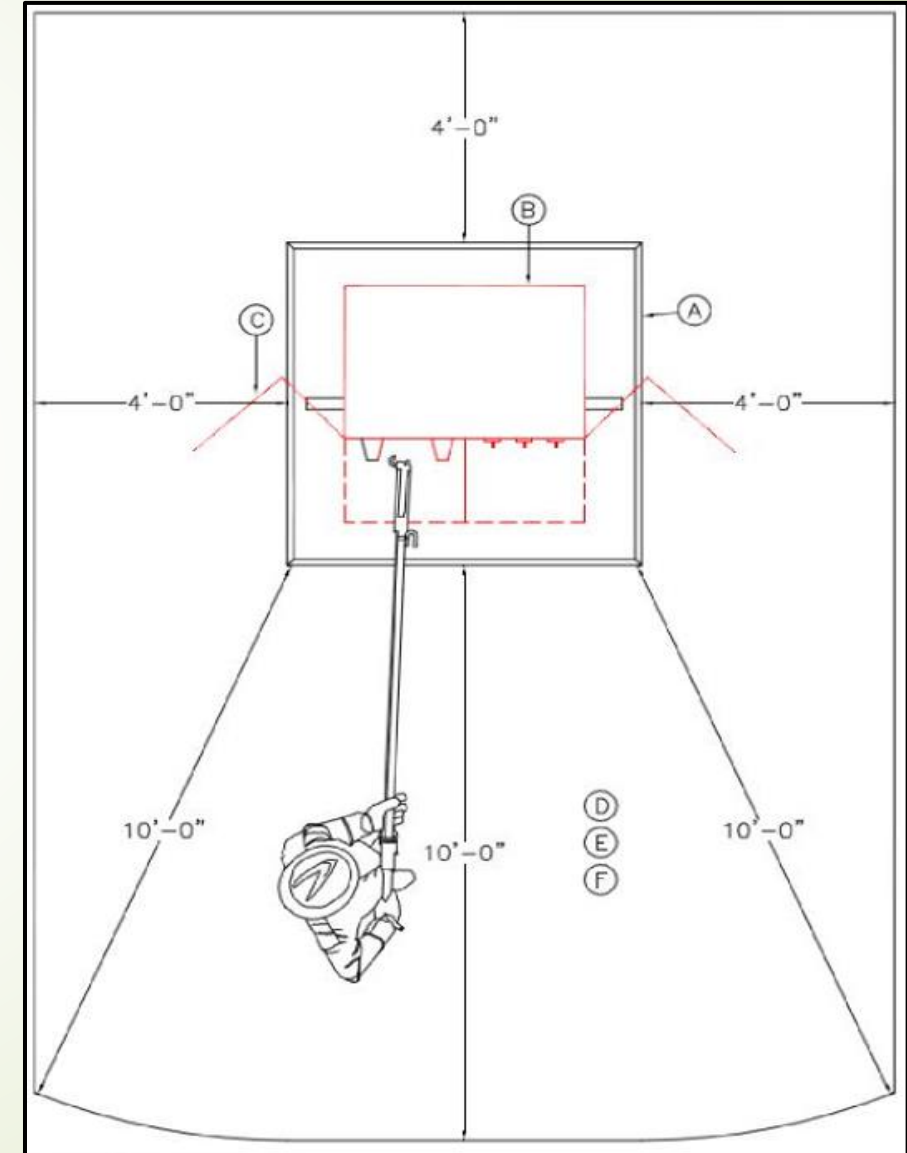
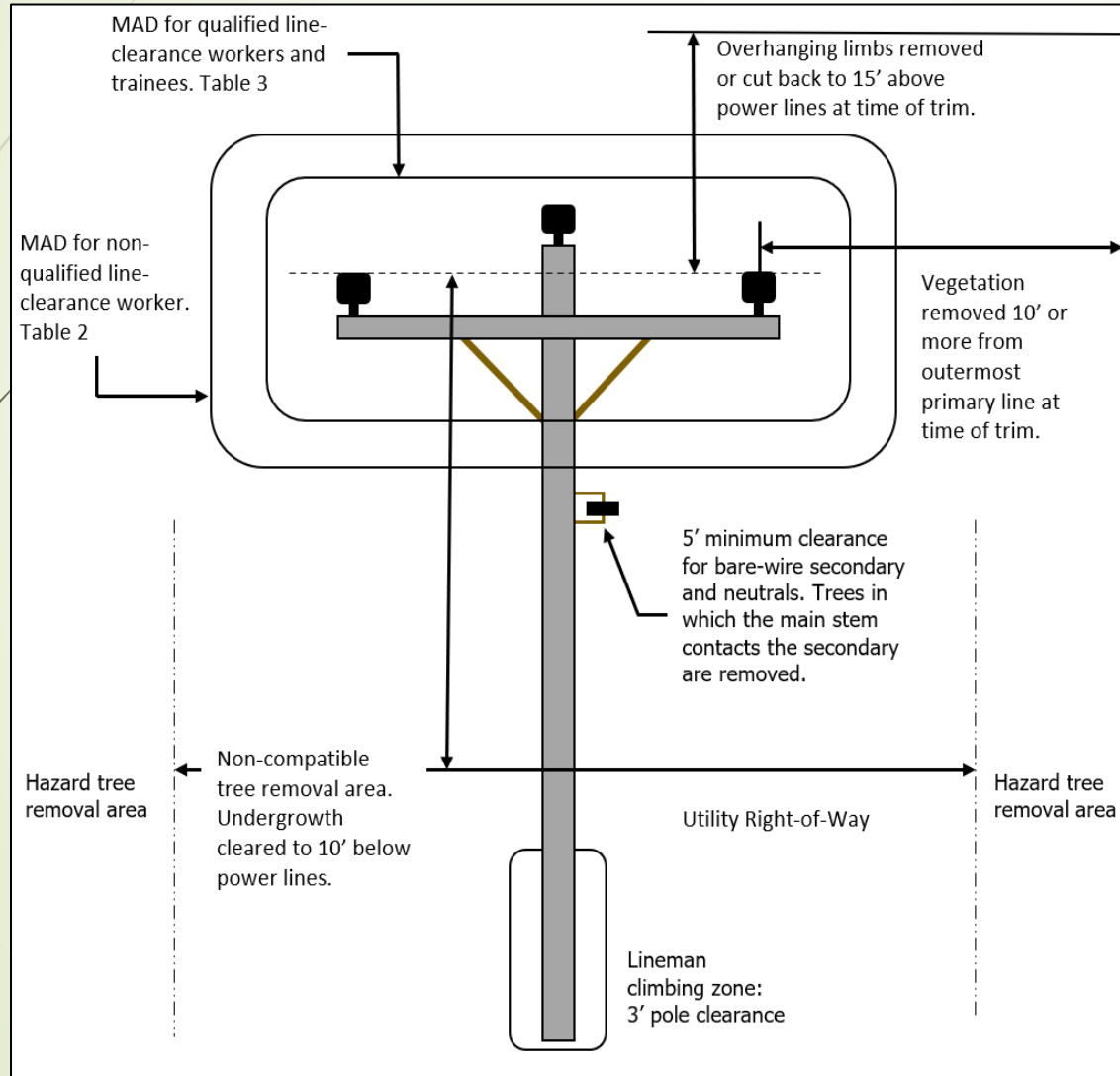


5. Inspections & Maintenance

- Overhead line inspections
- Pole inspections
- Substation & Recloser inspections
- GIS mapping
- LiDAR
- Infrared

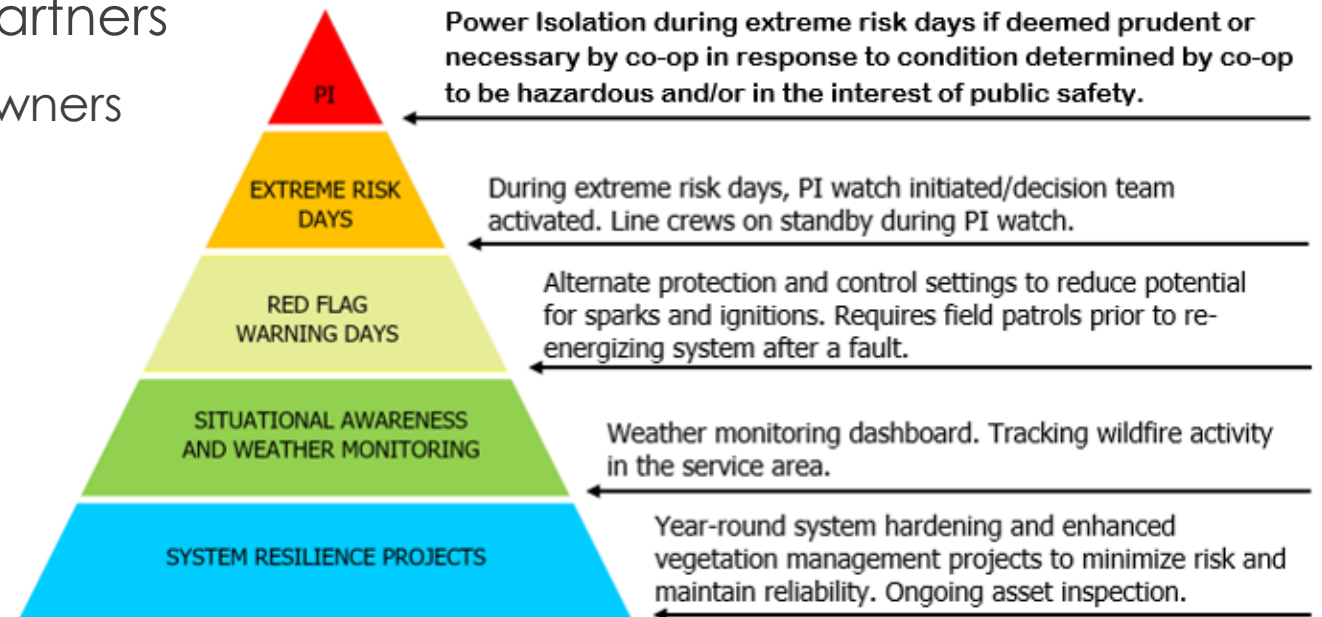


6. Vegetation Management



7. Operational Practices

- Situational Awareness & Weather Monitoring
 - Field observations, weather stations, cameras, and other sensors
- Standard Operating Procedure (SOP) for RFW periods
 - Extra-sensitive relay settings and Power Isolation
- Coordination with partners
 - KEMA, KFD, land-owners



7. Community Outreach

During an impending or actual power isolation event:

- Mass notification via phone/text/email as appropriate to the event
- Ongoing updates will be provided via media releases (available on KIUC website) and KIUC's social media

Members are encouraged to keep their contact information updated in their KIUC account

Wildfire mitigation information and resources are available on KIUC's website: www.kiuc.coop/wildfire

8. Implementation & Monitoring

- WMP is just one part of KIUC's Emergency Plans (hurricane, tsunami)
- WMP efforts will improve reliability while reducing risk
- WMP Performance Metrics:
 - Number of RFW
 - Number of time system is placed in "fire-safe mode"
 - Number of Power Isolation events & impact on reliability
 - Number of ignitions caused by KIUC
- KIUC will manage WMP cost-benefit to keep rates as low as possible

Estimated WMP Costs and Timeline

- 2025 mostly vegetation management and pole replacements
- 2026 & 2027 mostly fire-safe fuse and arrester replacements
- May be able to keep costs down by prioritizing areas for replacements
- Pursuing Federal grant funding to help offset costs

Table 6. Estimated WMP Costs (\$ in thousands)

	2025	2026	2027
WMP Development	\$ 20-50	\$ 20-50	\$ 20-50
WMP Implementation	\$ 5,600 to 9,020	\$ 10,460 to 18,920	\$ 13,560 to 20,920
WMP Administration	\$ 750	\$ 1,000	\$ 1,200

Comments